

# DOTHAN, ALABAMA

# 2022

OFFICIAL WELCOME GUIDE



**LOVE** ❤️ **DOTHAN**

#LOVEDOTHAN  
#LOVEDOWNTOWN

Kim Hayes



DOTHAN AREA CHAMBER OF COMMERCE



[WWW.DOTHAN.COM](http://WWW.DOTHAN.COM)

# FOR A LIFETIME OF HEALTHY, BEAUTIFUL SKIN

From advice on the best daily skin care to diagnosis and treatment of the most challenging skin conditions and skin cancers, our skin care experts can help.

 **DERMATOLOGY SPECIALISTS**  
of Alabama

**AQUA**  
MEDICAL SPA



\*If insurance pre-approval is required, scheduling may be affected.

## YOUR DOTHAN HEALTHY SKIN TEAM



**Jeffrey Stricker, DO**  
Board-Certified Dermatologist  
Board-Certified Dermatopathologist  
Mohs Surgeon



**Kelli Heer, PA-C**  
Certified Physician Assistant



**Nichole Prestwood, CRNP**  
Certified Registered  
Nurse Practitioner



**Tiffany Glover**  
Licensed Aesthetician

● ● ● Call Today, Be seen this week. ● ● ●

**(334) 669-3376 | MyDermSpecialists.com | AquaMedicalSpa.com**



**DID YOU KNOW THAT VISITORS SPENT NEARLY \$250 MILLION IN DOTHAN LAST YEAR?**



**STAY IN THE KNOW**



With a full schedule of regional and national tournaments, as well as multiple cultural events, Dothan welcomes millions of travelers every year. We want to make sure those visitors find you. Visit our website and sign-up for our newsletter to ensure you **stay in the know**.

# MAKING IT HAPPEN

SUPERIOR SERVICE

MARKETING

PRINTING

PUBLISHING

GRAPHIC DESIGN

DIRECT MAIL

WEBSITES



4826 S PARK AVENUE

DOTHAN, AL 36301

334.702.4063

MARY@PSIPRINTER.COM

WWW.PSIPRINTER.COM

Established 1996

# Contents

<b>4 Arts, Culture &amp; Community</b>	<b>22 Health Care</b>
4 Arts	23 Feature: Flowers Hospital
4 Recreation	<b>25 Active Adults</b>
6 Worship	25 Senior Activity Centers
<b>7 Business &amp; Economic Development</b>	<b>27 Real Estate &amp; Relocation</b>
7 Agribusiness	27 Dothan & Houston County. Regional Information
8 Manufacturing	30 Government Information
8 Finance	30 Utilities
12 Transportation	<b>31 Local Information</b>
13 Aviation	31 Marketplace
13 Communications	32 Advertiser Index
14 Retail	IBC Telephone Numbers of Importance
18 Workforce	
<b>19 Education</b>	
19 Higher Education	
20 Public Schools	
20 Private Schools	



The Dothan Area Chamber of Commerce has been helping shape the future of the Wiregrass area since its foundation in 1919. Created originally as an office to establish cotton and other produce prices, the Chamber now has over 1,100 members, committees and task forces, a 34-member Board of Directors and 11 full-time staff members. This team, along with government entities, community organizations, business leaders and local citizens, is positioned to meet any community or economic development opportunity in 2022.

A five-star accredited organization serving as a resource and advocate for business, the Chamber sets its priorities each year based on opportunities that will advance the economy and community in the Dothan area. The organization strives to shape the future for its members and the area's residents by building a community that will meet the challenges of today and tomorrow.



Produced in cooperation with the

### DOTHAN AREA CHAMBER OF COMMERCE

102 Jamestown Boulevard  
P.O. Box 638 Dothan, AL 36302  
334.792.5138 Fax 334.794.4796  
www.dothan.com  
chamber@dothan.com

### CHAIRMAN OF THE BOARD

Brad Kimbro

### PRESIDENT

Matt Parker

### COMMUNICATIONS DIRECTOR

Melia McKean



4826 S. Park Avenue,  
Dothan, AL 36301  
Mary T. Jarrett, President  
Jennifer Davis, Account Executive  
Phone: 334-702-4063  
Fax: 334-712-6532  
mary@psiprinter.com  
www.psiprinter.com

Reproduction of the whole or any part of the contents of this publication, by any method, for personal or company use or resale without permission from the publisher is strictly prohibited.

The information in this directory is gathered and compiled in a way to ensure maximum accuracy. Print Services Inc. cannot and does not guarantee the correctness of all information furnished it, nor the complete absence of errors or omissions; hence no responsibility for same can be, nor is assumed. In the event of error or omission for paid services of this directory, the liability shall be limited to a pro rata abatement of the charge paid to the company, but in no event shall liability exceed the amount payable to the company.

©2022 Print Services Inc. All Rights Reserved.

# Arts, Culture & Community

*The Soul of the Community*



## Arts

In a fast-growing population of diverse cultures, Dothan seizes the opportunity to educate, grow and expand on the universal affection for fine arts in every society. With The Cultural Arts Center, the Dothan Opera House, continuing expansion of the Wiregrass Museum of Art and Conference Center, George Washington Carver Museum and the historical preservation of Dothan's early history through Landmark Park and the Dothan Downtown Redevelopment Authority, the community's growth is reflected in its art, music and entertainment.

Local, state and national artists have made Dothan and the surrounding area a focal point for their particular style of cultural art. Every year the community continues to provide art and cultural experiences through the downtown mural program, Southeast Alabama Community Theater, Southeast Alabama Dance Company, Patti Rutland Jazz Inc., Tri-State Community Orchestra, the Dothan Area Botanical Gardens and more.

## Recreation

The area's southern climate is ideal for many activities including golf, swimming, tennis, softball, bike riding, running, walking or simply relaxing. The city's recreational department manages over 20 parks that include 19 children's playgrounds, 12 picnic pavilions, one archery range, one disc golf course, four fresh water lakes, a BMX bicycle race course, four outdoor swimming pools, two indoor pools (one of which is a therapeutic wellness pool) and a water park with four new slides and updated kiddie pool, one splash pad, six recreation centers, 43 tennis courts including a 20-court clay court complex built to professional standards, four pickleball courts, one football field, one football stadium, 43 baseball/softball fields which includes a five-diamond softball complex, two state-of-the-art five-field baseball complexes for youth, one state-of-the-art six-field baseball complex for youth and one state-of-the-art six-field softball complex for youth, six soccer fields and an abundant number of

additional playing areas for field team sports like soccer and football, one boardwalk, one outdoor fitness court, six walking trails and three bike trails, including Dothan's 387-acre Forever Wild Land Trust, creating mountain biking and hiking trails throughout the state.

The Rotary Miracle Field Complex houses the Miracle Field, which is designed for special needs athletes to be able to play on a rubber surface, two Dixie Boys Baseball fields, and a Rotary Miracle Playground with a rubber surface and multi-age, accessible play equipment.

Dothan also boasts a variety of golfing experiences with three large public courses, one private course and an array of small driving ranges.

Hunting, fishing, bird watching or just the general enjoyment of the natural world can also be discovered in the region. Nearby lakes, rivers, public or private gardens, state and national parks, the Gulf of Mexico and other natural open areas will take your breath away with their beauty, simplicity and managed care.

Dothan businesses have found success in commercial avenues of recreation to include bowling alleys, indoor skating, miniature golf and various other recreational activities. Ultimately, Dothan has a variety of activities, both organized and individual, to meet the challenge of providing recreation to everyone.



## GREENER DAYS AHEAD

Great golf happens on great courses. And courses don't get better than the ones on Alabama's Robert Trent Jones Golf Trail.



» ROBERT TRENT JONES GOLF TRAIL AT HIGHLAND OAKS  
904 Royal Parkway » Dothan, AL 36305 » 334.712.2820 » rtjgolf.com/highlandoaks

**THE Kart Doctor** LLC  
*The Original Cart Guy*

Ken Jernigan, Certified Technician has been servicing and repairing carts for over 20 years. Sales and Service on Carts.

9459 W US 84  
Newton, AL 36352  
**334-692-KART (5278)**

*Ken will get your cart up and running in no time!*

## Worship

As diverse are the variety of people within this community, so too are the forms of worship. Dothan and the surrounding area is the home of more than 150 worship centers, providing various choices of faith. Over the years, the strength of our churches, synagogue, mosque and meeting centers have contributed to an abundance of civic and social organizations that shape our future and form strong community outreach.

Sponsoring a range of community activities from youth camps, sporting leagues and scouting troops to singles group, charitable organizations and handicap programs, Dothan's diverse worship centers are respected and appreciated as an invaluable part of the community.



### FIRST UNITED METHODIST CHURCH

1380 W. Main St.  
Dothan, Alabama 36301  
[www.fumcdothan.org](http://www.fumcdothan.org)  
334.793.3555

*Please Join Us!*

#### Sunday Morning Worship\*

- In-Person Traditional and Contemporary Services  
- Live Stream on Facebook,  
YouTube, or at [fumcdothan.org](http://fumcdothan.org)

\*Please check [fumcdothan.org](http://fumcdothan.org) for current  
in-person worship & other opportunities.



### COVENANT UNITED METHODIST CHURCH

*Sundays*

8:15 am Traditional

9:45 am Contemporary

11 am Contemporary

*Join us in-person  
or online.*

**Pursue God. Unleash Compassion.**

3610 West Main Street  
Dothan, AL 36305 · (334) 793-4440  
[covenantdothan.org](http://covenantdothan.org)





# Dothan:

## *Growing New Business*

Dothan and the Wiregrass region continues to experience significant economic growth. This area works with businesses, government entities and citizens to continually build a thriving regional business network.



## Agribusiness

As individual countries become more dependent on outside sources of agriculture, the Dothan area and surrounding counties continue to meet the challenge of providing quality products and resources to the world. The Dothan Area Chamber of Commerce embraces Dothan's "first industry" and continues to assist in maintaining and creating new opportunities in the field of agriculture.

Diverse agricultural crops, livestock and poultry exported out of the Wiregrass include cotton, peanuts, corn, soybeans, wheat, hay, pecans, beef cattle, dairy products, poultry, eggs, catfish and hogs.

Out of all Alabama counties in 2020, Houston County ranked first in peanut production with 105 million pounds. The 35,000 acres harvested by the county's producers averaged 3,027 pounds per acre. The state average was 3,500 pounds. Alabama ranked second in the United States in peanut production behind Georgia. The county's second largest commodity was cotton production with 35,400 bales. (Source: USDA)

Agribusiness is a vital aspect of the Dothan economy. Three of Houston County's largest employers purchase agricultural products from area farmers for poultry processing, snack food and milk distribution. Other agribusinesses located in this area include retail of farm machinery, pesticides, fertilizers, milling, commodity warehousing and paper production.



*Dothan's diverse business and industrial community continues to shape the future through steady growth and stability. Public and private sectors, including the City of Dothan and Houston County governments, the Dothan Area Chamber of Commerce and various community-minded businesses, combine efforts on a daily basis to produce a balanced economy through diversification. Strong representation in retail, banking and finance, light manufacturing, agribusiness, aviation and health care, all form a resilient economy prepared to face challenges of the growing tri-state region.*



**DUNBARTON CORPORATION**  
*Your Complete Opening Solution*

**Proudly Made In AMERICA**

1101 Technology Drive  
 Dothan, Alabama  
 www.dunbarton.com  
 334.794.0661

## Manufacturing

Manufacturing and distribution centers are an integral part of Dothan's sustained economic well-being. From sheet metal, tires and signs, to motors, steel fabrication, doors, frames and more, the region's geographic location, climate, right-to-work legislation, tax base and quality labor force, all help create a profitable location for manufacturing and distribution.

Grow Dothan, the economic development arm of the Dothan Area Chamber of Commerce, supports relocating and expanding industries with one-on-one assistance in securing state, regional and local incentives, workforce development planning, determining suitable site and building locations and providing community contacts to meet relocation and expansion needs. As partners in growth, Grow Dothan targets various levels of industrial manufacturing and works diligently to diversify and balance Dothan's manufacturing base.

## Finance

As a regional hub for three states, Dothan's financial sector continues to grow in strength and security for Dothan businesses and residents. Over 20 local banks make Dothan their home and include numerous branches throughout the surrounding communities. The financial sector accounts for a little over 4 percent of all employment in southeast Alabama.

Expanding rapidly to accommodate growth and prosperity forged by a diverse local economy, businesses specializing in finance and financial services continue to meet the challenges of providing businesses, organizations and individuals with a variety of options. The financial sector offers a variety of resources and alternatives for each financial goal or challenge a business or individual may face. Accounting, brokerage, consulting and investment firms are a vital key to providing stability within our community. In doing so, they create additional wealth and resources that benefit community investments and individual resources.

**M + A**

**McDANIEL & ASSOCIATES PC**

CERTIFIED  
 PUBLIC ACCOUNTANTS  
 &  
 BUSINESS CONSULTANTS

101 Executive Park Drive  
 Dothan, AL 36303

T 334.792.2153 F 334.793.1216  
 www.mcdanielcpa.com



# FOR FIVE-STAR BACKYARDS.®



IF IT DOESN'T HAVE THIS **YELLA TAG**, YOU DON'T WANT IT.

For Five-Star Backyards®, YellaWood® and the yellow tag are federally registered trademarks of Great Southern Wood Preserving, Incorporated.

# HOUSTON COUNTY'S LARGEST EMPLOYERS

COMPANY	PRODUCT	NO. EMPLOYEES
Southeast Health	Medical Services	2,322
Dothan City & Houston County Schools	Educational Services	1,925
Flowers Hospital	Medical Services	1,100
City of Dothan	Government Offices & Agencies	1,082
Wayne Farms, LLC	Manufacturing/Production/Wholesale	1,000
Southern Nuclear (Farley)	Public Utilities/Environment	950
Wal-Mart SuperCenter #604, #2534 & Neighborhood Market	Shopping/Specialty Retail	747
Michelin North America Inc.	Manufacturing/Production/Wholesale	550
Houston County Government	Government Offices & Agencies	411
SpectraCare Health Systems Inc.	Counseling & Behavioral Services	400
AAA Cooper Transportation	Distribution/Logistics/Transportation	375
Wallace Community College	Educational Services	367
Twitchell Corp.	Manufacturing/Production/Wholesale	350
Extendicare Health & Rehabilitation Center	Physical Therapy & Rehabilitation	299
Comfort Systems USA Southeast	Heating & Cooling	260
Alabama Motor Express Inc.	Distribution / Logistics / Transportation	250
Coleman Worldwide Moving	Moving & Storage	250

## ACCRA COST OF LIVING INDEX SECOND QUARTER 2021 ACROSS UNITED STATES:

New York (Manhattan), NY	241.0
San Francisco, CA	187.1
Boston, MA	150.3
San Diego, CA	140.4
Denver, CO	112.6
Philadelphia, PA	109.0
Atlanta, GA	105.6
Detroit, MI	103.5
Phoenix, AZ	103.5
Tampa, FL	94.1
San Antonio, TX	92.5
Columbus, OH	92.4
St. Louis, MO-IL	87.8

### In Alabama:

Birmingham	94.3
Auburn-Opelika	93.0
<b>Dothan</b>	<b>92.8</b>
Huntsville	88.5
Montgomery	88.2
Decatur	86.6
Mobile	86.1
Florence	84.8
Anniston	82.3

## INDUSTRIAL PARKS:

- Ashford Industrial Park
- Cowarts Industrial Park
- Dothan Airport Industrial Park
- Dothan Industrial Park
- Golf Creek Business Park
- Houston County Distribution Park
- Houston County Port Authority Industrial Park
- Jackson County, Florida - MEGA Site 2,240 acres  
(Alabama-Florida Mega Site Project)
- Westgate Industrial Park

Large greenfield tracts and available buildings exist to accommodate a variety of industrial development needs.

For an up-to-date list of the industrial parks, visit the Dothan Area Chamber of Commerce website [www.dothan.com](http://www.dothan.com).

## FOREIGN TRADE ZONE NUMBER 233

Most of the industrial park areas are included in the zone and additions can be arranged based on needs and qualifications.

The zone benefits distribution activities and offers:

- No duty on value added
- No duty on re-exports
- No duty payment on damaged goods tariff
- Relief from inverted tariffs
- Improved cash flow
- Reduction in paperwork
- No duty on military and government related sales

Numbers-people who also  
happen to be people-people.

SMALL BUSINESS ACCOUNTING

- QuickBooks Pro Training • Financial Statement Preparation
- Payroll Services • Compliance and Consulting Services

*Set the bar higher.*

**JACKSON  
THORNTON**

Certified Public Accountants  
& Consultants

*jacksonthornton.com 334.793.7001*

# FIVE STAR is UNIQUE

JOIN A **CREDIT UNION** THAT  
HAS YOUR BEST INTEREST IN  
MIND.

JOIN ONLINE AND GET YOUR  
DEBIT CARD THE SAME DAY.

Your  
**FIVE STAR**<sup>™</sup>  
★ ★ ★ ★ ★  
**CREDIT UNION**

17 CONVENIENT LOCATIONS  
IN ALABAMA AND GEORGIA.

## WE OFFER

- **FREE** CHECKING
- MORTGAGE LOANS
- MANUFACTURED HOME LOANS
- AUTO LOANS
- CHIP/TAP TO PAY CREDIT & DEBIT CARDS
- FIVE STAR DIGITAL WALLET



**FiveStarCU.com | 888-619-1711**



BUSINESS & ECONOMIC DEVELOPMENT

# Transportation

Dothan is ideally situated in the southeast corner of Alabama, approximately 20 miles from the Florida and Georgia borders. Travel destinations like Mobile, Montgomery and Birmingham, Alabama; Atlanta and Albany, Georgia; and Tallahassee and Panama City, Florida, are accessible by highway, air, rail or water.

An excellent highway system is available to residents and businesses traveling or delivering goods into and out of the area. Interstate 10 is 35 miles south; U.S. Highways 231 and 431 are north/south arteries and U.S. Highway 84 runs east/west. Travel within Dothan and the surrounding areas is also seemingly effortless thanks to well-maintained city, county and state road systems. Whether using one of Dothan's 30-plus motor freight lines, a personal vehicle or bus line service, all roads lead back to Dothan.

The Dothan Regional Airport offers a convenient option when choosing air service for business or travel. Delta Airlines is the airport's air carrier with service to Atlanta and its connection to 171 cities. Delta Airlines offers daily non-stop regional jet flights between Dothan and Atlanta.

Transportation by rail or water is also available in the Dothan area with rail service provided by CSX, Gulf & Ohio and Bay Line Railroad and the nine-foot channel on the Chattahoochee River that offers access to the Intracoastal Waterway.

The area's excellent air, rail and road transportation networks reduce the cost and time of shipping a product. Geographically well positioned, some 50 percent of the U.S. population is within a 24-hour shipping distance. Imports and exports continue to rise to record numbers as international companies locate in the region and local companies take advantage of the global market.



## MODES OF TRANSPORTATION

Highways U.S. 231, U.S. 431, U.S. 84, AL 1, AL 12, AL 52, direct access to Interstate 10	
Bus Line	1
Rail Systems	3
Motor Freight Lines	30+ (LT and LTL services)
Inland Waterway System	nine-foot channel
Air Service	Atlantic Southeast Airlines to Atlanta, Ga.

## TRANSPORTATION

### Wiregrass Transit Authority

Public Bus Service	(334) 794-4093, ext. 1
Greyhound Bus Station	(334) 792-1191
Dothan Regional Airport	(334) 983-8100
Delta Airlines	(334) 983-3198

## PORTS

### Port of Mobile . . . . . [www.asdd.com](http://www.asdd.com)

- . . . . . Location: Mobile River; Empties Into Mobile Bay
- . . . . . 11th Largest Port in the United States
- . . . . . 37 Deep Water Berths
- . . . . . 4 Million Square Feet of Warehousing/Open Yards
- . . . . . Containerized, Bulk, Breakbulk, Roll-On/Roll-Off
- . . . . . Heavy Lift Cargoes

### Port of Panama City USA . . [www.portpanamacityusa.com](http://www.portpanamacityusa.com)

- . . . . . Location: Gulf of Mexico
- . . . . . 6 Deep Water Berths
- . . . . . 470,000 Square Feet of Warehousing/6 Acres Open Yards
- . . . . . Bulk and Breakbulk Freight

## PROXIMITY TO NEARBY CITIES

Atlanta, Ga.  
205 miles

Birmingham, Ala.  
185 miles

Columbus, Ga.  
99 miles

Jacksonville, Fla.  
281 miles

Mobile, Ala.  
191 miles

Montgomery, Ala.  
106 miles

Panama City, Fla.  
78 miles

# Aviation

Steeped in a history of aviation since World War II, Dothan and Houston County have supported the ongoing drive to reach innovative and technological advancements in the field of aviation. By assisting and supporting the military, businesses and community needs within this arena, Dothan and Houston County continues to lead the area.

# Business

Located strategically in the southeast corner of Alabama, Dothan holds a premier position on "South Alabama's Aviation Business Corridor." Infrastructure surrounding the Dothan Regional Airport assists Dothan-based businesses in providing services and products to the United States and international aviation communities.

# Military

Supporting Fort Rucker, a U.S. military installation located approximately 25 miles west of Dothan, is a priority within the Dothan community. Committed to the success of our nation and its protection, Fort Rucker symbolizes for Dothan citizenry the continuing efforts to protect democracy and the American way of life. Furthermore, Fort Rucker is the home of U.S. Army Aviation and the U.S. Army Safety Center. To carry out its mission, Fort Rucker supports a daytime population of about 20,210, including over 5,000 people in uniform, over 10,100 civilian and contract employees and over 5,090 family members on post. The installation, and active duty personnel, civilian workforce and financial impact continue to add diversification, growth and expansion to Dothan and the surrounding communities.

# Community

The Dothan Regional Airport is designated as an "Air Service Development Zone" by the U.S. Department of Transportation adding to the already resourcefully combined efforts by city, county and state agencies to encourage community and economic development. Averaging 90,000 aircraft operations annually, the airport is used for personal, military, freight and commercial flights. It offers commercial hangars, an all-weather runway, a 27,500-square-foot terminal and a 240-acre industrial park. In addition, local educational institutions and services offer valuable vocational training in the field of aviation, to make the local workforce "job ready" for aviation related businesses.

# Communications

Since the days of trading information at Poplar Head Springs, Dothan has grown along with its population to supply the surrounding area with news, information and connections to the world. Located within our community, Dothan and Houston County are home to a large regional newspaper, one weekly newspaper, four television stations, four cable system providers and 18 radio stations. The area also enjoys diverse services in internet and telecommunications.

CenturyLink, Comcast, Spectrum, Troy Cablevision Inc., Uniti Fiber, WOW! Business and others, all provide Internet access and/or website hosting services through either cable, DSL, fiber optics or dial-up use. Businesses and residents will also enjoy a broad range of choices and services provided by national, regional and local wireless, paging, radio, satellite and cellular companies.



## COMMUNICATION FACTS

**NEWSPAPERS**  
1 DAILY, 1 WEEKLY

**TELEVISION STATIONS**  
4

**CABLE SYSTEMS**  
4

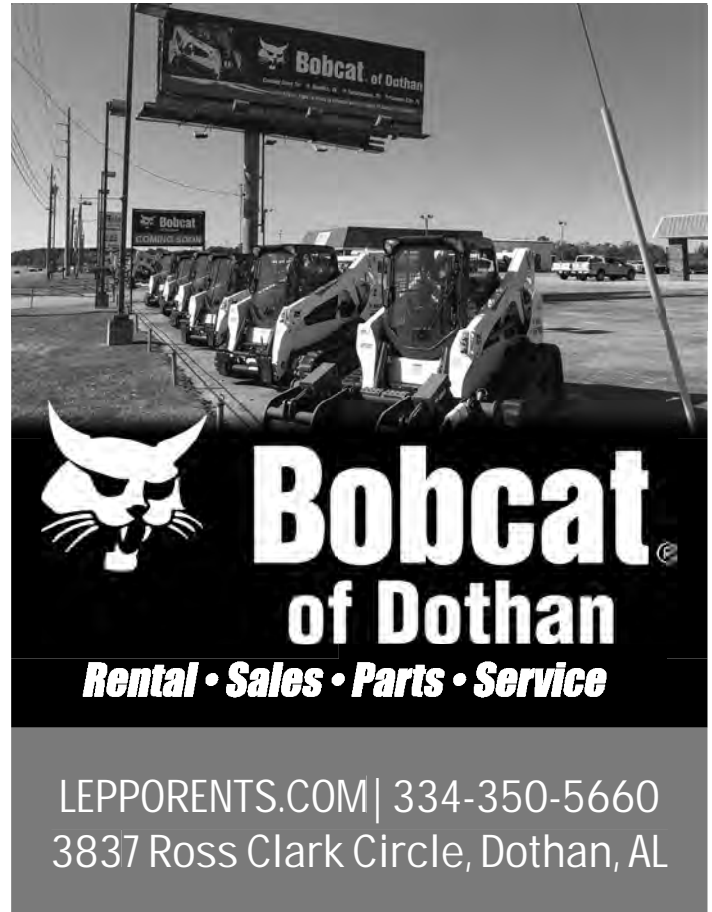
**RADIO STATIONS**  
18

BUSINESS & ECONOMIC DEVELOPMENT

## Retail

Meeting the retail needs of Dothan's residents in addition to Houston County residents and the surrounding neighbors in Coffee, Dale, Geneva and Henry counties, Fort Rucker, Georgia and Florida is a priority for Dothan area merchants. And retailers seem to be doing just that. When compared to other areas of its size, Houston County offers a much broader selection of retail businesses.

Located almost equal distance from Montgomery, Alabama, Albany, Georgia and Tallahassee, Florida, Dothan is a retail hub for about 500,000 within a 90-mile radius. Both Houston County and the city of Dothan's economy continues to experience tremendous growth and is continuously taking the necessary steps to ensure the area's future growth for both our citizens and businesses.



**Bobcat**  
**of Dothan**  
*Rental • Sales • Parts • Service*

LEPPARENTS.COM | 334-350-5660  
3837 Ross Clark Circle, Dothan, AL



Design your *dream*  
kitchen or bath <sup>with</sup><sub>our</sub>  
3D Design

*Studio*

[carpetlandusaal.com](http://carpetlandusaal.com)

2710 Ross Clark Circle  
Dothan, AL 36301  
334-793-1004

When it comes to floors and granite,  
“We are all you  
need to know.”



# Home

STRONG COMMUNITIES START HERE



## Alabama Strong

Locally owned by 14  
Southeast Alabama cities  
since 1952

## Collaborative

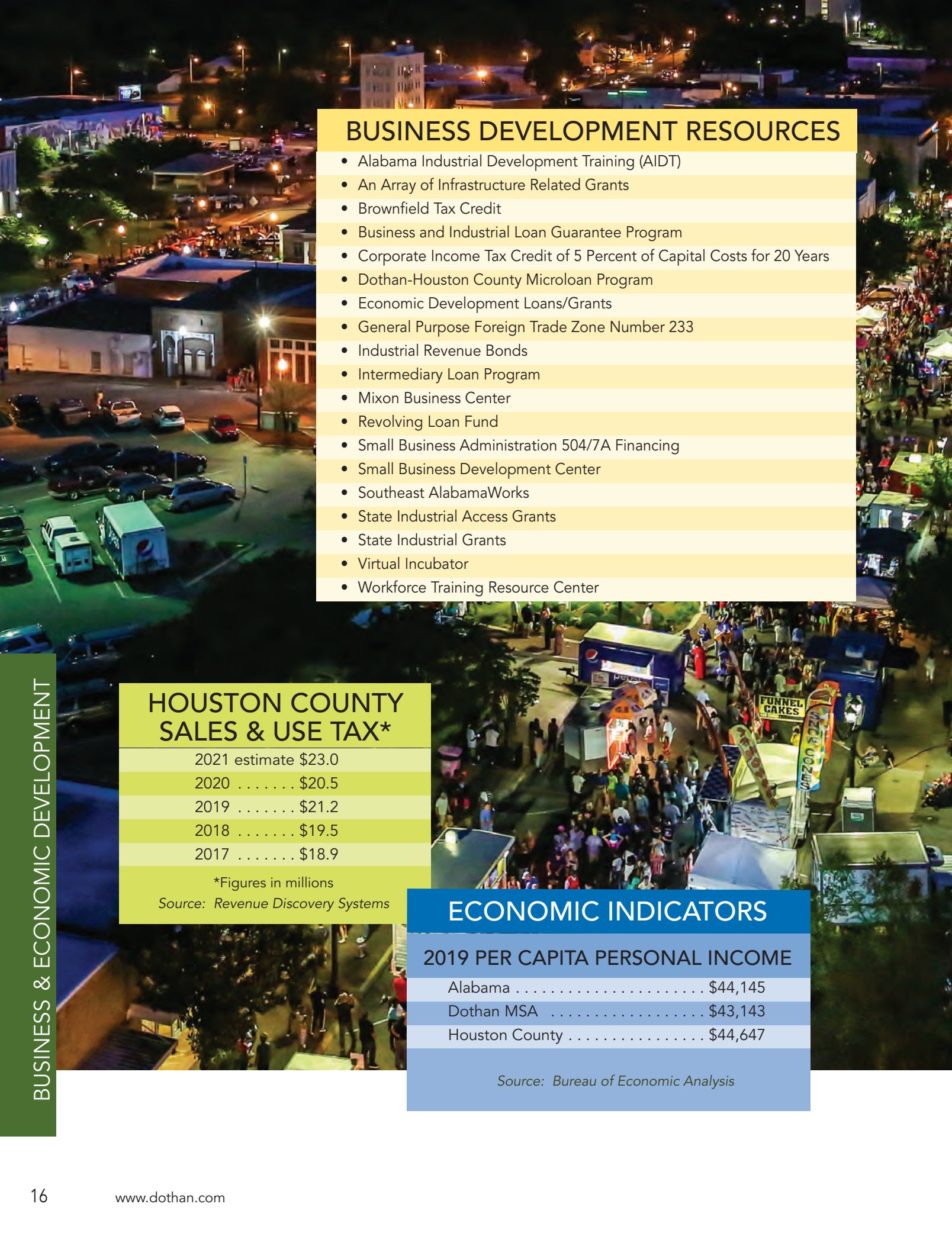
Committed to partnerships  
that prioritize regional  
industrial growth

## Exceptional Service

Caring for customers and  
our communities is our  
priority and privilege



# Southeast Gas



## BUSINESS DEVELOPMENT RESOURCES

- Alabama Industrial Development Training (AIDT)
- An Array of Infrastructure Related Grants
- Brownfield Tax Credit
- Business and Industrial Loan Guarantee Program
- Corporate Income Tax Credit of 5 Percent of Capital Costs for 20 Years
- Dothan-Houston County Microloan Program
- Economic Development Loans/Grants
- General Purpose Foreign Trade Zone Number 233
- Industrial Revenue Bonds
- Intermediary Loan Program
- Mixon Business Center
- Revolving Loan Fund
- Small Business Administration 504/7A Financing
- Small Business Development Center
- Southeast AlabamaWorks
- State Industrial Access Grants
- State Industrial Grants
- Virtual Incubator
- Workforce Training Resource Center

## HOUSTON COUNTY SALES & USE TAX\*

2021 estimate	\$23.0
2020	\$20.5
2019	\$21.2
2018	\$19.5
2017	\$18.9

\*Figures in millions

Source: Revenue Discovery Systems

## ECONOMIC INDICATORS

### 2019 PER CAPITA PERSONAL INCOME

Alabama	\$44,145
Dothan MSA	\$43,143
Houston County	\$44,647

Source: Bureau of Economic Analysis

## TAX RATES & INCENTIVES

In 2021, Alabama ranked 40th in the country for property tax and 35th for state income tax (Source: WalletHub).

### Property Tax

Inventory Property Tax Exemption	Yes
Average Houston County Property Tax 2021 (per acre)	.. \$359

### Corporate Income Tax

Corporate Income Tax Rate <sup>1</sup>	6.5%
State Revenue from Corporate Income (2021)	.. \$604 mil
Fed Income Tax Deduction w/o Limit	Yes
Worldwide Unitary Tax	No
Allows Fed ACRS Depreciation	Yes

### Sales/Use Tax

State Sales/Use Tax Rate	4%
Houston County Sales Tax	1%
Dothan Sales Tax	4%
Sales/Use Tax Exemptions	Yes
Manufacturing Equipment <sup>2</sup>	Yes
Air Quality Equipment	Yes
Water Quality Equipment	Yes

<sup>1</sup>Net effective corp. income tax rate on a graduated scale is 4.5% (Source: State Fact Finder, Commerce Clearinghouse (CCH), www.taxfoundation.org)

<sup>2</sup> If financed through ID Bonds and/or with approval by appropriate authority (Source: State Fact Finder, Commerce Clearinghouse (CCH), www.taxfoundation.org)

## UNEMPLOYMENT INSURANCE

New Employer Tax Rate	2.7%
Taxable Wage Base	\$8,000
Minimum Unemployment Insurance Tax Rate	2%
Maximum Unemployment Insurance Tax Rate	6.8%
Minimum Weekly UI Benefit Per Worker (2020)	\$45
Maximum Weekly UI Benefit Per Worker (2020)	\$275

## WORKERS COMPENSATION INSURANCE

Minimum Weekly Worker Compensation Payment (2021)	.. \$270
Maximum Weekly Worker Compensation Payment (2021)	.. \$987

## PERSONAL INCOME TAX

Per Capita Tax Revenue from Personal Income (2020)	\$983
Federal Income Tax Deduction w/o Limit	Yes

## AVERAGE SALARY AND INDIVIDUAL TAX BURDEN

Per Capita State 2020 Income Tax (ADOR)	\$983
Dothan MSA 2019 Annual Average Wage Per Job (BEA)	\$42,712
Dothan MSA 2019 Annual Average Manufacturing Salary (BEA)	\$49,707
State Income Tax Rate	2% - 5%
State/Local 2018 Taxes Per Capita (PARCA)	\$3,201

# Workforce

Workforce development has been identified in both the private and public sector as a critical component of economic development. Initiatives to address the shortage of skilled, unemployed or underemployed potential employees available for expansion of existing businesses or recruitment of new businesses have been on-going at the federal, state and local levels.

The Dothan Area Chamber of Commerce's workforce development initiative includes dedicated certified staff members who participate in workforce development initiatives at the state, regional and local levels. Part of this participation is holding seats on the Region 6 Workforce Council, which is the lead organization for collaborative regional workforce development, and the Workforce Innovation and Opportunity Act Board.

In support of regional workforce development and economic development activities, the Dothan Area Chamber of Commerce posts the State of the Workforce document on the Chamber website [www.dothan.com](http://www.dothan.com). This document catalogs regional human capital and educational/training assets, projected needs and provides analysis.

Other support activities include the Chamber's sponsorship of the Southeast AlabamaWorks, a nonprofit organization established to fulfill the workforce needs of Region 6, which is a 10-county workforce region comprised of Barbour, Butler, Coffee, Covington, Crenshaw, Dale, Geneva, Henry, Houston and Pike counties. Southeast AlabamaWorks' mission is to identify and address the workforce needs of new and existing business and industry by developing mutual beneficial partnerships with education systems, training providers and job seekers. Visit [www.southeastalabamaworks.com](http://www.southeastalabamaworks.com) for additional information.

## DOTHAN MSA REGIONAL EMPLOYMENT BY MAJOR INDUSTRY 2019

Education Services/Health Care/Social Assistance	23.90%
Manufacturing	17.30%
Retail Trade	12.80%
Arts/Entertainment/Recreation/ Accommodation/Food Services	9.30%
Transportation/Warehousing	5.20%
Other Services, except Public Administration	5.10%
Public Administration	5.10%
Admin & Support/Waste Management Services	4.70%
Wholesale Trade	3.80%
Construction	3.60%
Finance/Insurance/Real Estate/Rental/Leasing	3.56%
Professional/Scientific/Management/ Technical Services	3.10%
Agriculture, Forestry, Fishing and Hunting, Mining	1.68%
Information	0.88%

Source: U.S. Census Bureau

### 2020

#### DOTHAN METROPOLITAN AREA

(Annual Averages)

CIVILIAN LABOR FORCE  
Dothan Metro Area . . 64,007

UNEMPLOYMENT  
Dothan Metro Area . . . . 5.1%

#### HOUSTON COUNTY

(Annual Averages)

CIVILIAN LABOR FORCE  
Houston County . . . . 46,358

UNEMPLOYMENT  
Houston County . . . . . 5.4%



# Education

Public,  
Private,  
Vocational  
& Collegiate



From pre-school to doctoral degrees, Dothan's educational sector covers most business and societal needs to improve and provide a wide variety of educational opportunities. Local efforts to support education through personal and financial commitments have helped to make Dothan and Houston County excellent school systems. There are several superb elementary and secondary schools with religious and college-preparatory curricula, if you prefer a private system.

Dothan area residents are extremely concerned with providing our children with the best education attainable. As a result, the school systems adopted a Career Quest/Technical Preparation program. It emphasizes advanced communications, mathematical, scientific, technological knowledge and skill development to graduate well-trained and educated employees and employers. Industrial/Engineering, Health/Human Services, Business/Information Systems and Arts/Humanities make up the four program clusters and lead to college or training for immediate employment in the workforce. The programs have since become a national model.

High school graduates may attend Wallace Community College, a two-year associate degree institution, or Troy University Dothan, a four-year university that offers undergraduate and graduate degrees in many disciplines. Vocational education is available in the Dothan area as well. Facilities and programs at the Dothan Technology Center, Houston County Career and Technical Center and Wallace Community College provide for development of skills needed to pursue many different jobs.

## Medical School

In the early 1990s, leaders in Alabama identified the need for more primary care physicians in the state, and in 2005, after years of coordinating activities to accomplish this goal, formed the Alabama Medical Education Consortium.

After careful research and examination, the AMEC and the Houston County Health Care Authority, the operator of Southeast Health, determined that it would be feasible for the state to develop its own college of osteopathic medicine to address the shortage of primary care physicians in the state. In May 2010, the Alabama College of Osteopathic Medicine, a nonprofit, private institution, was established.

ACOM received its Private School licensure from the Alabama Department of Postsecondary Education in 2011, and provisional accreditation with the ability to recruit students from the Commission on Osteopathic College Accreditation on July 1, 2012.

The Dothan area welcomed ACOM to its extensive list of educational opportunities when the school opened its doors and welcomed its first class of students in August 2013. (Source: [www.acomedu.org](http://www.acomedu.org))

# Public Schools

## Dothan

There is one First Class Pre-K school, two primary K-2 schools, six K-6 schools, three intermediate 3-6 schools, one 7-9 school, one 10-12 school, one technology center, one community college and one regional university in Dothan.

## Houston County

There are two K-12 schools, two K-5 schools, one K-6 school, one 6-8 school, one 6-12 school, two 7-12 schools, one 9-12 school and a career academy in Houston County.

# Private Schools

There are 12 private and/or parochial schools in Dothan and Houston County combined.

# School Systems

Children may be enrolled in the public-school system by contacting the Dothan City Board of Education, 1665 Honeysuckle Road, Suite 1, Dothan, AL 36305 (334) 793-1397 or the Houston County Board of Education, 404 W. Washington St., Dothan, AL 36301 (334) 792-8331.



# DOTHAN AREA SCHOOL DIRECTORY AREA CODE 334

## Dothan City Schools ([www.dothan.k12.al.us](http://www.dothan.k12.al.us))

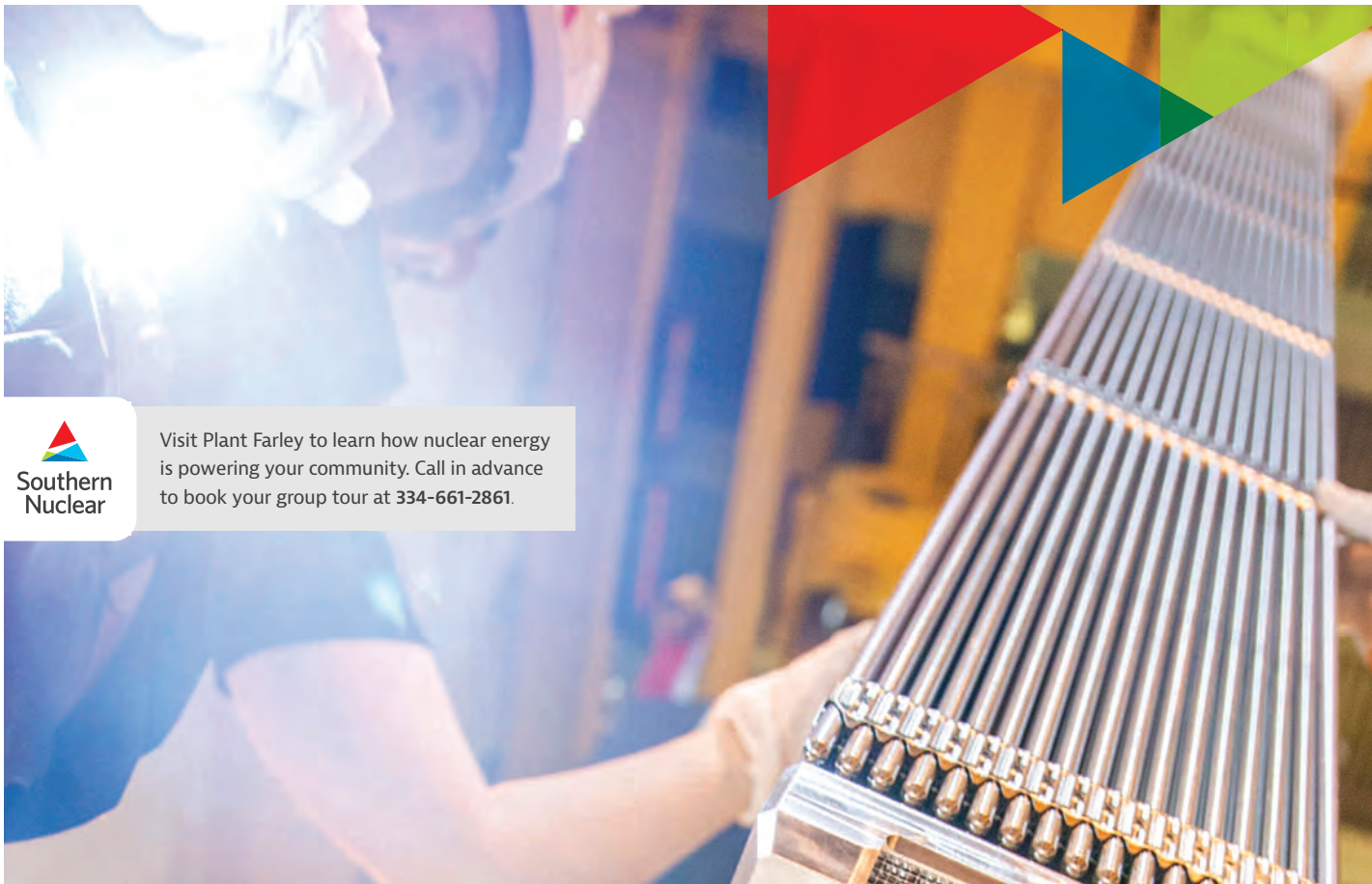
Beverlye Intermediate School.....	794-1432
Carver School for Math, Science and Technology .....	794-1440
Dothan City Early Education Center .....	794-1420
Dothan High School .....	794-1410
Dothan Preparatory Academy .....	794-1400
Dothan Technology Center.....	794-1436
Girard Intermediate School.....	794-1426
Girard Primary School .....	794-1467
Head Start Center .....	794-1447
Heard Elementary School .....	794-1471
Hidden Lake Primary School .....	794-1491
Highlands Elementary School .....	794-1459
Jerry Lee Faine Elementary School.....	794-1455
Kelly Springs Elementary School.....	983-6565
Morris Slingluff Elementary School .....	794-1479
Pass Academy (Alternative).....	671-1474
Selma Street Elementary School.....	794-1463

## Houston County Schools ([www.hcboe.us](http://www.hcboe.us))

Ashford Elementary School.....	899-3458
Ashford High School .....	899-5411
Cottonwood High School .....	691-2587
Hope High School.....	702-4168
Houston County Alternative School.....	671-9295
Houston County Career Academy .....	899-3308
Houston County High School .....	696-2221
Rehobeth Elementary School.....	677-3838
Rehobeth High School .....	677-7002
Rehobeth Middle School .....	677-5153
Webb Elementary .....	792-5744
Wicksburg High School.....	692-5549

## Private Schools

ABC Academy.....	793-6462
Beulah Land Christian Academy .....	673-2767
Crossroads Baptist Academy .....	794-8222
Dothan Montessori School.....	671-7170
Emmanuel Christian School .....	792-0935
First Presbyterian Church PCA .....	793-6283
Houston Academy .....	794-4106
Northside Methodist Academy.....	794-7273
Northview Christian Church Academy.....	699-6873
Providence Christian School .....	702-8933
Ridgecrest Baptist Church.....	792-9406
St. Columba Catholic Church.....	793-6748
Westgate Christian School .....	793-3399



Visit Plant Farley to learn how nuclear energy is powering your community. Call in advance to book your group tour at 334-661-2861.

See what else you've been missing at dhcls.org

Dothan Houston County Library System

Library of Things

Seed Library

Connect Pass

Proctoring

Projector

StoryWalk®

Playstation4

Paint & Sip

Passports

Shop Vac

Video Camera

Hotspots

Wifi

Acoustic Leaf

Guitar Blower

SEADL

Digital Sound System

Movie Tickets

Laptops

Ebooks

Audio Books

Xbox One X

Story & Craft Time

more than books.

**DOTHAN HOUSTON**  
COUNTY LIBRARY SYSTEM



## Your Future. Our Focus.

Focus on the Possibilities.



**WALLACE  
COMMUNITY  
COLLEGE**  
Dothan • Eufaula

[www.wallace.edu](http://www.wallace.edu)

Academic Transfer • Career Tech • Health Sciences

EDUCATION



# Health Care

## *At the Center of Your Health*

Medical treatment in Dothan is sophisticated and technologically advanced. The Dothan area is home to approximately 350 physicians representing virtually every medical specialty, and more than 50 dentists, all offering quality service across the continuum of care.

An established regional center for quality medical services, Dothan provides superb health care to residents of southeast Alabama, southwest Georgia and northwest Florida. Four hospitals, six immediate-care clinics, mental health, rehabilitation facilities, sensory-impaired centers, numerous pharmacies and the Military Assistance to Safety and Traffic program, which provides air transportation for the critically ill or injured, ensure Dothan's outstanding level of health care.

With two acute-care hospitals and over 3,700 trained professionals, the 420-bed regional referral center Southeast Health and the 235-bed Flowers Hospital, the community enjoys almost every benefit of modern medicine. The use of highly sophisticated technology and specialized equipment provided by highly-skilled professionals means it is not necessary to travel long distances for open-heart surgery, cancer treatment, magnetic resonance imaging or many other services.

To meet area demand for same-day surgery, Dothan Surgery Center, an affiliate of Southeast Health, and Southeast Surgery Center operate outpatient surgery clinics.

Encompass Health, a regional rehabilitation treatment hospital, compliments services offered by the two other hospitals, while meeting the special needs of patients recovering from orthopedic surgery, stroke and head injury.

Noland Hospital Dothan, a long-term acute care hospital located on the fourth floor of Southeast Health, provides care for medically complexed acutely ill patients. Care is delivered to patients whose conditions have stabilized beyond the need for intensive care, but whose needs may be too demanding for traditional rehabilitation, skilled nursing care or nursing home care. At Noland

Hospital Dothan, patients can expect an extended hospital stay averaging 25 days.

Flowers Hospital and Southeast Health also offer oncology centers, 24-hour emergency room service, women's medicine and heliports from which to airlift patients requiring specialized treatment. To facilitate the transfer of critically ill patients, both Dothan hospitals operate Mobile Intensive Care Units to provide optimum medical care for patients being transferred from smaller or rural hospitals. This program has enhanced the referral system throughout the area, allowing patients to remain close to their homes and families during a medical crisis.

Today, Dothan serves as a major cardiology referral center for residents of the tri-state area. With the advent of catheterization procedures such as angioplasty, nuclear cardiology, arthroscopy and electrophysiological testing, heart patients throughout the Wiregrass region can receive the specialized care they need.

Both hospitals offer multi-story doctor's buildings providing offices, labs and convenience of immediate physician access to hospitalized patients, and centralization of outpatient visits. Furthermore, private practice, specialists and additional medical services are available throughout the city.

The area has 13 nursing homes and assisted living facilities, including Somerset Assisted Living Residences, The Terrace at Grove Park, Wesley Place on Honeysuckle, Westside Terrace and Rehab First and White Hall Assisted Living Community. A continuum of care for the senior community is also provided at Extendicare Health and Rehabilitation Center, Wesley Place and Westside Terrace's rehabilitation wings

Also available to area residents is the Wiregrass Mental Health System, including SpectraCare Health Systems Inc., which provides services for substance abuse, mental retardation, mental illness and mental health.





Make an

Appointment 

to start *living better.*

**Better living starts with taking good care of yourself.** At Flowers Medical Group, our healthcare providers take the time to identify your health risks and can help you prioritize good health. Regular checkups and age-appropriate screenings are important to be healthy now – and to stay well in the future.

With same-day appointments and online scheduling, we make it easy to make an appointment right now. You can even see us from the comfort of home via telehealth.

*Put your health first and start living better right now.*

**Make an appointment at [FlowersPCP.com](https://FlowersPCP.com) or call 844-956-3223.**





**aventa™**

SPECIALIZED  
WOMEN'S CARE - OBGYN

Visit us to experience the patient-focused care that has made us the premier practice in the Wiregrass region.

202 Westside Drive  
Dothan, AL 36303  
334-699-2229

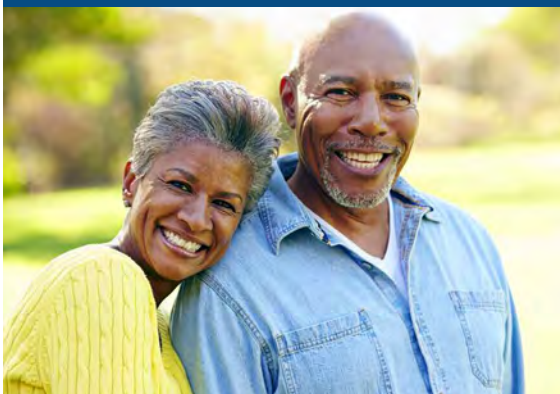
[AVENTAWOMAN.COM](http://AVENTAWOMAN.COM)



**Eye Center South**  
*Your vision. Our mission.*



**Supporting the Chamber & Our Community for Over 33 Years**



**EYE CARE YOU CAN TRUST**

- Cataracts
- Glaucoma
- LASIK
- Retina Care
- Diabetic Eye Care
- Macular Degeneration
- Corneal Care
- Pediatric Ophthalmology
- Oculofacial Plastic Surgery
- Dry Eye
- Cosmetic Injections

**Schedule an appointment today! 800-467-1393 • [EyeCenterSouth.net](http://EyeCenterSouth.net)**

**2800 Ross Clark Circle • Dothan, AL 36301**



**EXPERT EYECARE,  
LATEST EYEWEAR**

HEALTH CARE

**Optometry services including exams, glasses & contacts**



<p><b>VCS DOTHAN</b> 1936 Ross Clark Cir. Dothan, AL 36301 (334) 794-0585</p>	<p><b>VCS @ DENNEY</b> 151 E Main St. Dothan, AL 36301 (334) 234-9902</p>	<p><b>VCS ENTERPRISE</b> 607 Boll Weevil Cir. #C Enterprise, AL 36330 (334) 347-6599</p>	<p><b>VCS MEDICAL TOWER</b> 2826 Ross Clark Cir, Ste 102 Dothan, AL, 36301 <b>OPENING IN 2022!</b></p>
---	---	--	--

**VisionCenterSouth.net** AN OPTOMETRIC DIVISION OF EYE CENTER SOUTH

**AREA SENIOR  
ACTIVITY CENTERS**

Ashford Senior Center . . . . .	(334) 899-5716
Baptist Village Senior Center . .	(334) 793-3930
Columbia Senior Center . . . . .	(334) 696-4529
Cottonwood Senior Center . . . .	(334) 691-3491
Dorothy Quick Senior Center . .	(334) 793-3090
James N. Green Senior Center .	(334) 696-4417
Madrid Senior Center . . . . .	(334) 677-3435
Rose Hill Senior Center . . . . .	(334) 615-3740
Taylor Senior Center . . . . .	(334) 677-5536
Webb Senior Center . . . . .	(334) 702-8449

**Active Adults**  
*The Golden Years*

Dothan is one of the region's most progressive cities. The area embraces the best that life has to offer, providing its residents not only modern conveniences and amenities of much larger cities, but also retains the charm and friendliness of the South.

Located a few short miles from the state lines of Florida and Georgia, you are within a three-hour drive from the foothills of the Appalachians in Birmingham or the sugar white sands of Panama City Beach, located 78 miles south of Dothan.

You can find a fishing and hunting paradise within a 25-mile radius of Dothan. Golf is also very attractive at one private and three public golf courses, including Highland Oaks, a stop on Alabama's Robert Trent Jones Golf Trail. Leisure recreation and all its amenities are beautiful in Dothan.

Being on a fixed income, retirees also fall into a lower Alabama income tax category. Income from specified retirement systems and benefits received under a "defined benefit plan," as defined under Section 414(j) of the Internal Revenue Code, are exempt from Alabama income tax. For federal retirees, there is no state tax on such income.

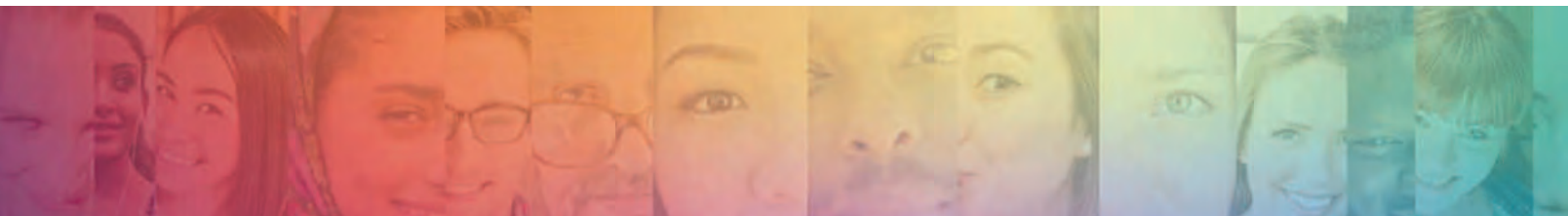
The one thing that stands out to almost all newcomers in Dothan is the people. Nowhere will you ever find a community of people who are friendlier and more caring. Residents that move into the area discover something wonderful about Dothan ... it's the perfect place to live, work and play.

Dothan Area Chamber of Commerce

ACTIVE ADULTS

# Energize & Impact

At Wiregrass Foundation, we believe Wiregrass area nonprofits have the potential to change the dynamics of our community for good, and we believe partnerships are essential to accomplishing their work. That is why we intentionally invest in programs that empower nonprofits to achieve more, go further, and dream bigger. Together we can energize and impact our community.

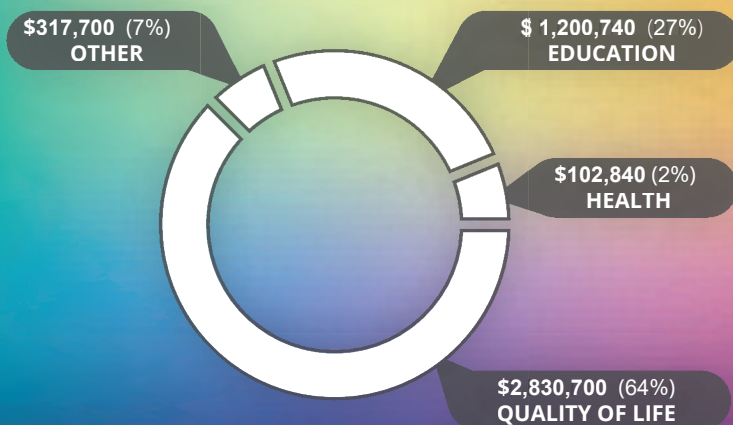


## 2021 Community Impact

Total Funding	\$4,452,000
Nonprofit Partners Funded	63

### Impact Highlights

Bright Key  
CapCONNECT – WF Capacity Building Program  
COVID-19 Relief  
Summer Feeding Program  
Transformation Through the Arts  
Wiregrass Public Safety Center



1532 Whatley Drive  
Dothan, Alabama 36303  
334.699.1031  
wiregrassfoundation.org

# Real Estate & Relocation

A Place to Call Home

## REGIONAL INFORMATION

### Square Miles

Houston County . . . . . 579  
Dale County . . . . . 561

### Population

Dothan  
2020 (estimate) . . . . 71,072  
2010 . . . . . 65,496  
1990 . . . . . 53,589  
1980 . . . . . 48,750

Houston County  
2020 (estimate) . . . 107,202  
2010 . . . . . 101,547  
1990 . . . . . 81,331  
1980 . . . . . 74,632

Combined counties population  
50-mile radius (2020): 441,958

(Source: AIDT, "Population Demographics Report", Emsi Q4 2020 Data Set)

Relocating to Dothan is a great experience and a chance to enjoy a quality lifestyle. You will find schools, health care, shopping, worship centers and business centers in close proximity to almost every housing option available. Dothan's housing market offers the choice of a large city or rural setting. From the urban apartment and well-maintained subdivision to the farmhouse with country acreage, Dothan's available real estate provides a unique and affordable selection.

Housing prices vary according to location, size and features. The average median sales price for a home in the Dothan area was \$173,167, well below the U.S. median price of \$314,467. Dothan also offers an impressive rental market with single-family homes, apartment complexes and townhouses in a variety of sizes, prices and floor plans. And once you find the perfect home, take advantage of utility costs far below the national average and very low property taxes. (Source: *The University of Alabama, Culverhouse College of Commerce, Alabama Center for Real Estate, Alabama Housing Affordability Index, First Quarter 2021*).

Whether moving to Dothan for the first time or returning to enjoy the city's charm and friendliness, let the Dothan Area Chamber of Commerce make your transition smoother with contacts, services and resources that our local Chamber members can offer.

## STATE INCOME TAX

### Married/File Joint

Adjusted Gross Income of \$10,500 or more

First \$1,000 . . . . 2%  
Next \$5,000 . . . . 4%  
Over \$6,000 . . . . 5%

### Single/Head of Household

Adjusted Gross Income \$7,700 or more

First \$500 . . . . . 2%  
Next \$2,500 . . . . 4%  
Over \$3,000 . . . . 5%

## TAXES

State Sales Tax . . . 4%  
City . . . . . 4%  
County . . . . . 1%  
TOTAL . . . . . 9%

## CLIMATE

Altitude	321 feet above sea level
Avg. Annual Rainfall	57 inches
Avg. Annual Temperature	66 degrees F
Avg. January Low	36 degrees F
Avg. January High	59 degrees F
Avg. July Low	69 degrees F
Avg. July High	93 degrees F

Dothan and Houston County have a "Good" air quality index as reported by the American Lung Association using the Environmental Protection Agency's Air Quality Index.



410 N. Shady Lane  
 Dothan, AL 36303  
 334-793-6600  
[www.alfredsilibarealty.com](http://www.alfredsilibarealty.com)



Bobby Hewes



Lee Thomas



Robert Hewes



Kay McKnight  
 Relocation Director



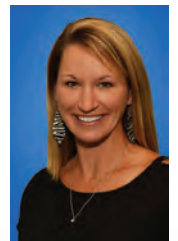
Amber Abercrombie



Andy Barfield



Joan Brock



Amy Brown



Elsie Campbell



Chelley Carroll



Alissa Childree



Debra Clark



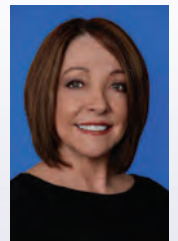
Kathy Cleveland



Kelli Cundith



Kay Daniels



Elisa Donn



Phyllis DuBose



Bobby Estes



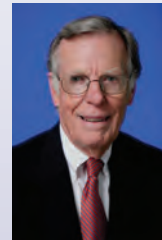
Dianne Galos



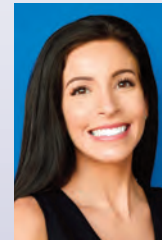
Alicia Hicks



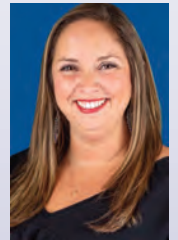
Jenny Holman



Merritt Holman



Paisley Kelly



Mollie Kelley



Robin Locke



Caitlin Moore



Donna Reetz



Abby Rogers



Lindsey Rushing



Gary Saliba



Nikki Santora



Amelia Shelley



Emily Shiver



Emily Stewart



Evelyn Thornton



Angie Turner



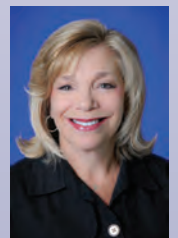
Amy Underwood



Donna Wade



Leanne Webster



Debby Wilson



# 334.792.7474

Berkshire Hathaway HomeServices Showcase Properties, is your local full service real estate brokerage, dedicated to providing the highest level of customer service. Call today to speak with a knowledgeable, local real estate professional, or stop by our office, located on Hartford Hwy., behind Southside Lowe's.



## **Dothan3DTours.com**

## **BHHS-ShowcaseProperties.com**

[www.facebook.com/BHSShowcaseProperties](http://www.facebook.com/BHSShowcaseProperties)

2307 Hartford Hwy., Suite 5, Dothan, AL 36305 (behind Southside Lowe's)

©2020 BHH Affiliates, LLC. An independently owned and operated franchisee of BHH Affiliates, LLC. Berkshire Hathaway HomeServices and the Berkshire Hathaway HomeServices symbol are registered service marks of HomeServices of America, Inc.® Equal Housing Opportunity. 

# It's How Pest Control is Done



SEE A BUG... CALL

## **Tabor**

### **Pest Control**

FOR A FAST  
**FREE QUOTE CALL**  
**877-448-2267 NOW!**

ANTS • ROACHES  
SPIDERS • RODENTS  
BED BUGS • MOSQUITOS  
FLEAS • TERMITES

REAL ESTATE & RELOCATION

## LAW ENFORCEMENT & FIRE PROTECTION

**Law** – Over 320 City & County Officers

**Fire** - 162 personnel with eight paramedic engines and two ladder truck/EMT units. Houston County has 17 volunteer fire departments that the Dothan Fire Department works with in training and response.

The Dothan Fire Department also has a Hazardous Materials Team and a Technical Rescue Team, including swift water rescue.

**HAZMAT Team** - The Dothan Fire Department’s HAZMAT Team provides hazardous materials response to the City of Dothan and the surrounding region. All firefighters within the fire department are certified to the HAZMAT Technician level. The HAZMAT Team participates in the Alabama Mutual Aid System, or AMAS, and is one of nine teams across the state of Alabama. The HAZMAT Team can respond to identify unknown hazardous materials, including weapons of mass destruction, mitigate hazards associated to the incident and decontaminate citizens and firefighters. There are 27 members on this team.

**Technical Rescue Team** - The Technical Rescue Team is another AMAS Team and responds to all technical rescue incidents in and around Dothan. The team responds to high angle rope, confined space, trench, machinery extrication and structural collapse rescue. In 2013, TRT added swift water rescue to its capabilities and is continuing to train and develop team members to this critical rescue discipline. This is one of nine heavy rescue teams across the state and there are 48 members on this team.

City of Dothan Fire Insurance Rating: 1

### Utilities

Within Dothan’s city limits, contact the Dothan Utilities, 125 N. St. Andrews St., Dothan, AL 36303, (334) 615-4100. Utility services may be obtained by contacting the sources listed below for the following towns in Houston County:

- Alabama Power Co. . . . . (800) 245-2244
- Wiregrass Electric Cooperative . . . . . (800) 239-4602
- Ashford City Hall . . . . . (334) 899-3366
- Avon Town Hall . . . . . (334) 899-3715
- Columbia City Hall . . . . . (334) 696-4417
- Cottonwood Town Hall . . . . . (334) 691-2671
- Cowarts Town Hall . . . . . (334) 792-8920
- Gordon City Hall . . . . . (334) 522-3113
- Kinsey Town Hall . . . . . (334) 793-5409
- Madrid City Hall . . . . . (334) 677-5312
- Rehobeth City Hall . . . . . (334) 671-5829
- Taylor Town Hall . . . . . (334) 677-5079
- Webb Town Hall . . . . . (334) 792-0386

### Natural Gas

Available within the Ross Clark Circle area of Dothan, and to limited areas of Dothan outside of the Circle, Southeast Gas is located at 2390 Ross Clark Circle, Dothan, AL 36301, (334) 794-0567. A security deposit is required.

### Telephone/Internet

Customers should call CenturyLink (800) 201-4099, Comcast (800) 266-2278, Spectrum (866) 874-2389, Troy Cablevision Inc. (334) 566-3310, Uniti Fiber (334) 618-0081 or WOW! Business (334) 699-3333 for new residential telephone, cable and/or Internet service.

### Vehicle Registration

Registration and license plates may be obtained at the Houston County Administrative Building, first floor, 462 N. Oates St., Dothan, AL 36303, (334) 677-4734.

### Driver’s License & Tags

An Alabama driver's license must be secured within 30 days of establishing residency. The written examination and driving test for a license may be taken at the Alabama State Troopers' Office, 5679 Montgomery Highway, Dothan, AL 36303, (334) 983-5616, or contact the Houston County Probate Driver's License Division at (334) 677-4742, 462 N. Oates St., Dothan, AL 36303 for more information.

### Pets

Cats and dogs in Houston County are required to have valid rabies inoculation certification and must wear a valid tag at all times. Dothan enforces a leash law for dogs.

### Voting

A person may register to vote with the Board of Registrars, third floor, Houston County Administrative Building, 462 N. Oates St., Dothan, AL 36303, (334) 677-4774.

### Newspapers

*The Dothan Eagle* (daily) (334) 792-3141 and the *Dothan Progress* (weekly) (334) 712-7887 are located at 227 N. Oates St., Dothan, AL 36303.

### Veterans Affairs

The Houston County Veterans Affairs office is located at 1685 Ross Clark Circle, Dothan, AL 36301, (334) 677-4749.





**Caring  
Transitions<sup>®</sup> of Dothan**  
Senior Relocation • Downsizing • Estate Sales

334-547-7777  
www.caringtransitions.com



LIFE IS BETTER  
*at The Cottages*

thecottagesdothan.com

*The Cottages is a neighborhood concept of upscale cottages for lease nestled in the west side of Dothan.*

203 Front Porch Court  
Midland City, AL 36350

334-671-4663  
info@thecottagesdothan.com

DOTHAN'S PREMIER COMMUNITY OF APARTMENT LIVING



101 MONTROSE COURT  
DOTHAN, ALABAMA 36305  
334-671-1815  
HIGHLANDSTRAILAPARTMENTS.COM



# NAITALCOR

Commercial Real Estate Services, Worldwide.

**(334) 699-8000**  
**www.talcor.com**

107 Hidden Glen Way, Dothan, AL 36303



There's Room for You at  
Sweetwater Apartments of Dothan

BOOK YOUR TOUR APPLY TODAY  
sweetwaterapartmentsofdothan.com



103 Sweetwater Drive Dothan, AL 36305 334-678-7368

# Marketplace



# Advertisers Index

## ACCOUNTANTS

Jackson Thornton ..... 11  
 McDaniel & Associates, PC ..... 8

## ADVERTISING / GRAPHIC DESIGN / MARKETING / MEDIA / PRINTING

Print Services Inc. .... 2

## APARTMENTS

Highlands Trail Apartments ..... 31  
 Sweetwater Apartments ..... 31  
 The Cottages Dothan, LLC ..... 31

## ARTS / CULTURE / ENTERTAINMENT

Dothan Houston County Library System .. 21  
 Visit Dothan ..... 1

## AUTOMOBILE RENTING & LEASING

Bobcat of Dothan / Leppo Rents ... 14

## CONSTRUCTION

Carpetland USA ..... 14

## DERMATOLOGY

Dermatology Specialist of  
 Alabama ..... Inside Front Cover

## EDUCATIONAL SERVICES

Wallace Community College ..... 21

## FINANCIAL INSTITUTIONS

Five Star Credit Union ..... 11

## MANUFACTURING / PRODUCTION / WHOLESAL

Dunbarton Corp. .... 8  
 Great American Wood Preserving, Inc .. 9

## MEDICAL SERVICES

Aventa Specialized Women's Care . 24  
 Flowers Hospital ..... Feature 23  
 Southeast Health ..... Back Cover

## NONPROFIT ORGANIZATIONS

Wiregrass Foundation ..... 26

## OPTOMETRY / OPHTHALMOLOGY

Eye Center South ..... 24  
 Vision Center South ..... 25

## PERSONAL SERVICE & CARE

Caring Transitions of Dothan ..... 31

## PEST CONTROL SERVICES

Tabor Pest Control ..... 29

## PUBLIC UTILITIES / ENVIRONMENT

Alabama Power Co. .... 32  
 Farley Nuclear Energy Education Center .... 21  
 Southeast Gas ..... 15

## REAL ESTATE - RESIDENTIAL

Berkshire Hathaway HomeServices  
 Showcase Properties ..... 29  
 Coldwell Banker - Alfred Saliba Realty ... 28

## REAL ESTATE - COMMERCIAL

NAI Talcor ..... 31

## RELIGIOUS ORGANIZATIONS

Covenant United Methodist Church . 6  
 First United Methodist Church ..... 6

## SPORTS & RECREATION

Highland Oaks Golf Course ..... 5  
 The Kart Doctor, LLC ..... 5

## Our commitment to you is stronger than any storm.

Most people don't spend a whole lot of time thinking about their power. It's our job to keep it that way. That's why we develop and use the latest technology to prevent outages and restore power faster than ever. Our team works 24/7 to get your lights back on, and we keep you informed of our progress.

If you've got an outage, report it at [AlabamaPower.com/reliable](http://AlabamaPower.com/reliable), or call 1-800-888-APCO (2726).



© 2021 Alabama Power Company





# Telephone Numbers of Importance

**EMERGENCY**  
Police, Fire, Rescue . . . . . 911

**DOTHAN AREA CODE** . . . . . 334

**HOUSTON COUNTY SHERIFF DEPARTMENT**  
Houston County Courthouse . . . . . (334) 677-4882  
144 N. Oates St., Dothan, AL 36303

**DOTHAN POLICE DEPARTMENT**  
Non-Emergency . . . . . (334) 793-0215  
210 N. St. Andrews St., Dothan, AL 36303

**FIRE DEPARTMENT**  
Administrative Offices . . . . . (334) 615-3500  
600 Columbia Highway, Dothan, AL 36301

## FREQUENTLY CALLED TELEPHONE NUMBERS

Alabama Cooperative Extension System . . . (334) 794-4108  
1699 Ross Clark Circle, Suite 4, Dothan, AL 36301

Alabama Department of Revenue  
State Tax Forms . . . . . (334) 793-5803  
344 N. Oates St., Dothan, AL 36303

City of Dothan  
126 N. St. Andrews St., Dothan, AL 36303  
Business License . . . . . (334) 615-3165  
Department of Leisure Services . . . . . (334) 615-3700  
Civic Center - Box Office . . . . . (334) 615-3175  
- Administration . . . . . (334) 615-3170

Dothan Career Center . . . . . (334) 792-2121  
787 Ross Clark Circle, Dothan, AL 36303

Dothan Area Chamber of Commerce . . . . . (334) 792-5138  
102 Jamestown Blvd., Dothan, AL 36301

Houston County Courthouse . . . . . (334) 677-4800  
114 N. Oates St., Dothan, AL 36303

Houston County Probate Office  
462 N. Oates St., Dothan, AL 36303  
Business License . . . . . (334) 677-4742  
Marriage License . . . . . (334) 677-4721  
Hunting/Fishing/Boat License . . . . . (334) 677-4742

Houston County Revenue Commission  
Tax Payments . . . . . (334) 677-4712  
462 N. Oates St., Dothan, AL 36303

Dothan-Houston County Library  
445 N. Oates St, Dothan, AL 36303 . . . . . (334) 793-9767  
535 Recreation Drive, Dothan, AL 36303 . . . (334) 699-2950

Main Post Office - Downtown . . . . . (334) 794-8567  
379 N. Oates St., Dothan, AL 36302

National Peanut Festival Association . . . . . (334) 793-4323  
5622 U.S. Highway 231 South, Dothan, AL 36301

Small Business Development Center . . . . . (334) 674-2425  
Troy University, Troy, AL 36082

Social Security Administration . . . . . (877) 452-4192  
1778 Whatley Drive, Dothan, AL 36303

Southeast Alabama Regional Planning  
and Development Commission . . . . . (334) 794-4093  
462 N. Oates St., Dothan, AL 36303

Veterans Affairs . . . . . (334) 677-4749  
1685 Ross Clark Circle, Dothan, AL 36301

Visit Dothan . . . . . (334) 794-6622  
3311 Ross Clark Circle, Dothan, AL 36303

Wiregrass 2-1-1 . . . . . 211  
545 W. Main St., Suite 313, Dothan, AL 36301

## COMMUNITY & MEETING FACILITIES

Dothan Civic Center . . . . . 3,100 seats  
Dothan Convention Center . . . . . 1,800+ seats  
Dothan Opera House . . . . . 598 seats  
Landmark Park Stokes Activity Barn . . . . . 350+ seats  
National Peanut Festival Fairgrounds . . . . . 2,000 seats  
Rip Hewes Stadium . . . . . 10,000 seats  
Hotels/Motels . . . . . 34 (2,700 rooms)  
Regional Shopping Malls . . . . . 1  
Outdoor Shopping Centers . . . . . 30+  
Centers of Worship . . . . . 150+

# SICK TODAY?

**CALL  
855.SE.CARES**

---

**SAME DAY  
PRIMARY CARE VISITS**

---

[SoutheastHealth.org](http://SoutheastHealth.org)



ACOM Ashford Clinic  
Eastside Clinic  
Enterprise Clinic  
Medical Center Clinic  
Westgate Clinic

